

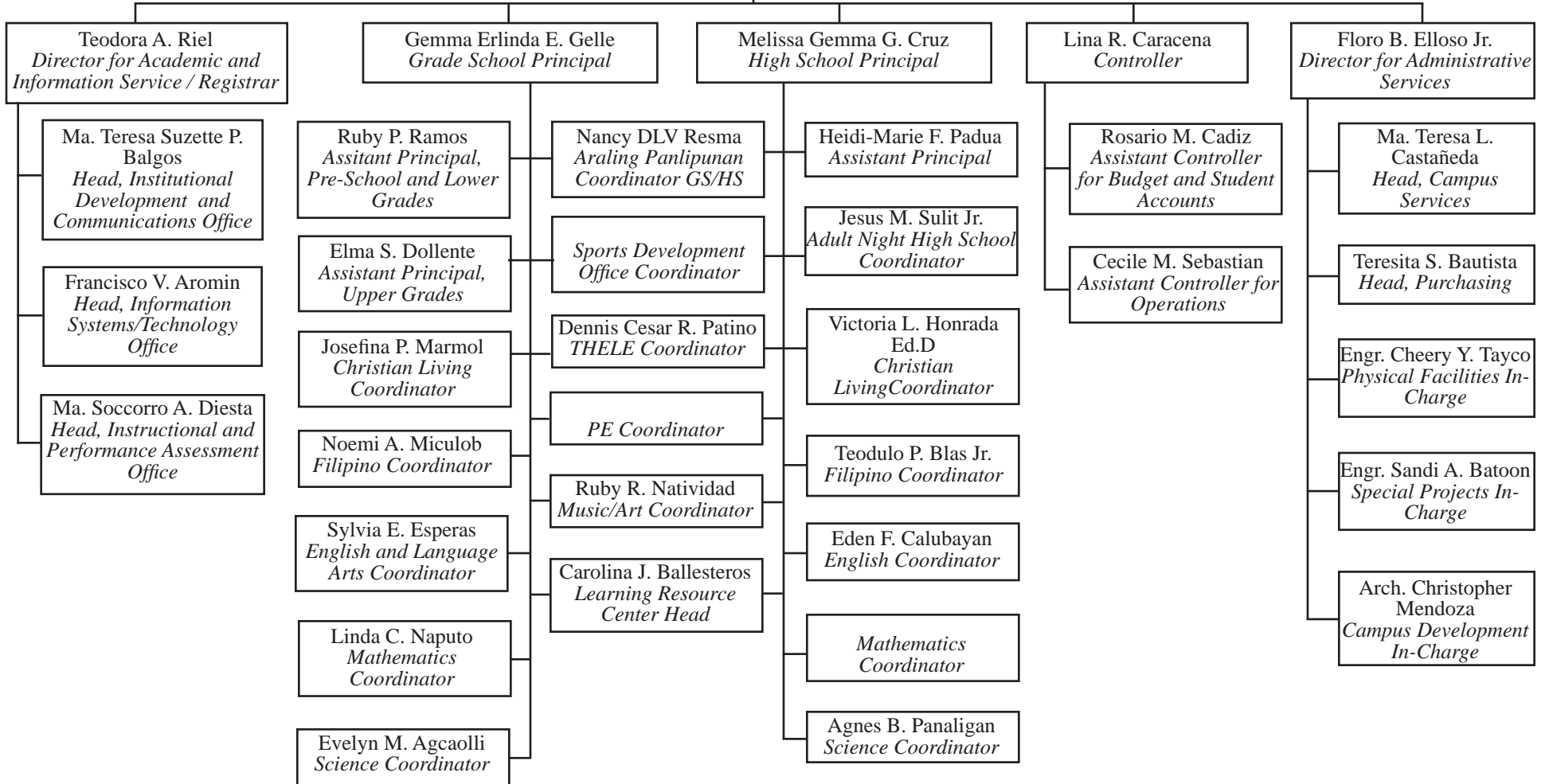


De La Salle Santiago Zobel School
School Administration
SY 2008-2009

STUDENTS
 Board of Trustees
 Br. Dennis Magbanua FSC
President

Lasallian Formation Programs Coordinator

Emma C. Cristobal
Planning and Personnel Unit Head



Lasallian Partners (Faculty, Administrative and Support Staff)